

SNAP PORT LINEUP



More Fun. Less Effort.



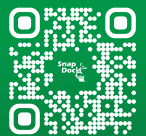
Snap Port Lineup	Snap Port	Snap Port 80	Snap Port Inline
Specifications			
Operating Capacity	1750 lbs / 794 kg	1883 lbs / 855 kg	2460 lbs / 1116 kg
Weight	381 lbs / 173 kg	427 lbs / 194 kg	729 lbs / 331 kg
Dimensions	168" x 59"	156" x 79"	326" x 59"
The Snap Dock Advantage			
Two-Piece Design	✓	✓	✓
Built-In Bow Stop	✓	✓	✓
Adjustable Rollers	✓	✓	✓
Universal PWC Port	✓	✓	✓
20" Walking Surface	—	✓	—
Multiple PWC Storage	—	—	✓

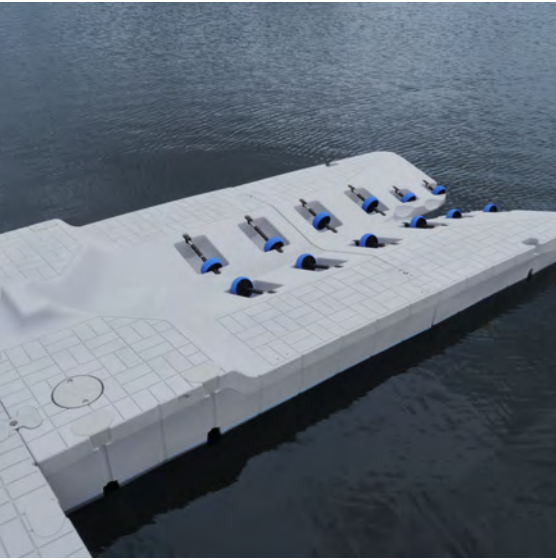
The most user friendly, low impact PWC Port Lineup on the market.

- 📞 Best-In-Class Customer Service
- 🏪 50+ Preferred Dealers
- 🔧 Easy Installation

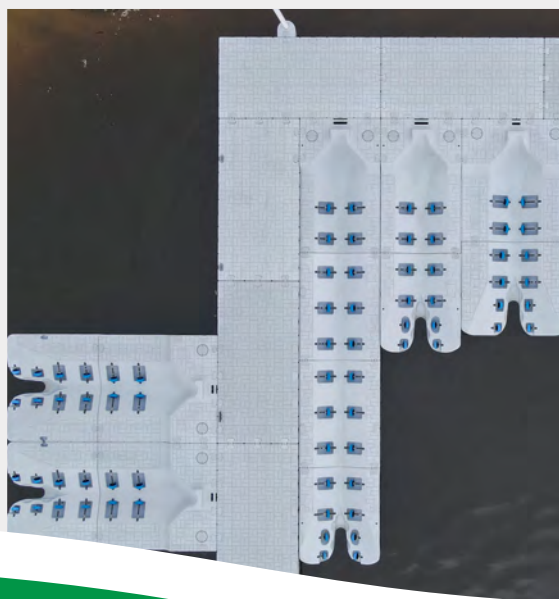
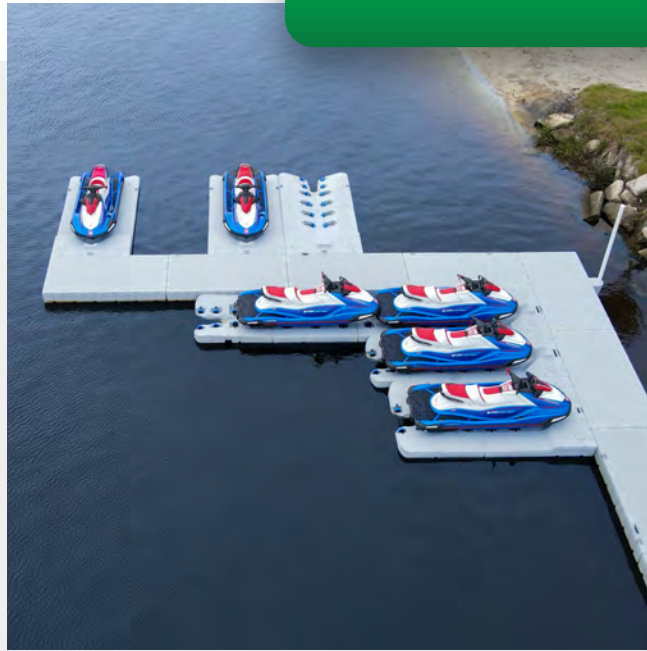


1-800-483-5205
snapdock.com
 sales@snapdock.com





Dealer Installations



- Best-In-Class Customer Service
- 50+ Preferred Dealers
- Easy Installation



1-800-483-5205
snapdock.com
sales@snapdock.com

